

Deliverable

D7.1: Impact assessment analysis

WP	7	Dissemination and Exploitation planning
Task	7.1	Set-up an impact assessment plan and analysis

Dissemination level¹	PU
Type²	R

Due delivery date	30/07/2020
Actual delivery date	15/08/2020

Lead beneficiary	MedTech Europe
Contributing beneficiaries	All partners

Document Version	Date	Author	Comments ³
V00	15.07.2020	Isabella Notarangelo, MedTech Europe	Creation
V01	15.08.2020	Yves Verboven, MedTech Europe	Final

¹ Dissemination level: **PU**: Public; **CO**: Confidential, only for members of the consortium (including the Commission Services); **EU-RES**: Classified Information: RESTREINT UE (Commission Decision 2005/444/EC); **EU-CON**: Classified Information: CONFIDENTIEL UE (Commission Decision 2005/444/EC); **EU-SEC** Classified Information: SECRET UE (Commission Decision 2005/444/EC)

² Type of the deliverable: **R**: Document, report; **DEM**: Demonstrator, pilot, prototype; **DEC**: Websites, patent filings, videos, etc.; **OTHER**; **ETHICS**: Ethics requirement; **ORDP**: Open Research Data Pilot

³ Creation, modification, final version for evaluation, revised version following evaluation, final

Deliverable abstract

The deliverable D7.1 provides an analysis of the impacts of the EURIPHI at the time of finalization of the project and the to be expected impact of EURIPHI Post 2020. The EURIPHI partners will ensure a continued impact of the EURIPHI 2020 project both in the implementation of cross-border collaborative value based innovation procurement as to inform innovation and procurement policy at EU and more local level.

Deliverable Review

Reviewer #1: Yves Verboven			Reviewer #2 (optional):		
Answer	Comments	Type *	Answer	Comments	Type *

Is the deliverable in accordance with

the Description of Action?	<input checked="" type="checkbox"/> Yes <input type="checkbox"/> No	<input type="checkbox"/> M <input type="checkbox"/> m <input type="checkbox"/> a	<input type="checkbox"/> Yes <input type="checkbox"/> No		<input type="checkbox"/> M <input type="checkbox"/> m <input type="checkbox"/> a
the international State of the Art?	<input checked="" type="checkbox"/> Yes <input type="checkbox"/> No	<input type="checkbox"/> M <input type="checkbox"/> m <input type="checkbox"/> a	<input type="checkbox"/> Yes <input type="checkbox"/> No		<input type="checkbox"/> M <input type="checkbox"/> m <input type="checkbox"/> a

Is the quality of the deliverable in a status

that allows it to be sent to European Commission?	<input checked="" type="checkbox"/> Yes <input type="checkbox"/> No	<input type="checkbox"/> M <input type="checkbox"/> m <input type="checkbox"/> a	<input type="checkbox"/> Yes <input type="checkbox"/> No		<input type="checkbox"/> M <input type="checkbox"/> m <input type="checkbox"/> a
that needs improvement of the writing by the originator of the deliverable?	<input type="checkbox"/> Yes <input checked="" type="checkbox"/> No	<input type="checkbox"/> M <input type="checkbox"/> m <input type="checkbox"/> a	<input type="checkbox"/> Yes <input type="checkbox"/> No		<input type="checkbox"/> M <input type="checkbox"/> m <input type="checkbox"/> a
that needs further work by the Partners responsible for the deliverable?	<input type="checkbox"/> Yes <input checked="" type="checkbox"/> No	<input type="checkbox"/> M <input type="checkbox"/> m <input type="checkbox"/> a	<input type="checkbox"/> Yes <input type="checkbox"/> No		<input type="checkbox"/> M <input type="checkbox"/> m <input type="checkbox"/> a

* Type of comments: M = Major comment; m = minor comment; a = advice

Table of Contents

1. INTRODUCTION.....	p.4
2. EURIPHI Impact Analysis	p.5
2.1 Operationalizing Cross-Border Collaborative	
Value-Based Innovation Procurement	p.5
2.2 Network and Readiness of Health & Social Care Region to apply innovation	
procurement of Innovative Solutions (PPI/PCP)	p.8
2.3 Building out Value Based (Innovation) Procurement community of	
practice.....	p.12
2.4 Value Based Innovation procurement to unlock innovation in health and social care	
delivery and system transformation	p.13

1. Introduction

This document is the **Deliverable 7.1 EURIPHI impact assessment analysis** of the Work Package 7 – Dissemination and Exploitation Planning of the project **EUropean Wide Innovative Procurement of Health Innovation (EURIPHI)** funded by the European Commission under the H2020 coordination and support action under the grant agreement no. 825922.

The deliverable is divided into 4 sections, reporting the state to build a and foster a change across Europe using cross-border value based innovation procurement to innovate the delivery of health and social care across Europe. It will also highlight plan to ensure a continued strive to use innovation procurement and expected future impact by the exploitation of EURIPHI post 2020.

The paragraph *Operationalizing Cross-Border Collaborative Value-Based Innovation Procurement* provides an overview of the instrument, guidance, case examples developed and/or further advanced by the EURIPHI consortium. The information is and will be available at www.euriphi.eu. EURIPHI complements previous work on innovation procurement in general and accounts for the specificities of health care. A special focus will be provided on the preparatory work for obtaining successful PPI/PCP proposals and applied in the field of integrated care solution to innovate the delivery of care and rapid diagnosis management by means of rapid diagnostic tests.

The paragraph on *Network and Readiness of Health Regions to apply innovation procurement of Innovative Solutions (PPI/PCP)* provides an analysis of countries and regions status and initiatives in using innovation procurement to respond to unmet need/care delivery shortcomings. The initial network and future planned initiatives to build out a sustainable EURIPHI Health Regional Network will be described and the impact to be expected analysed.

The paragraph on *Building out Value Based (Innovation) Procurement community of practice* provides an analysis of the interest and engagement of procurement organization in innovation procurement and the integration into a European Value Based Procurement Community of Practice to ensure a continued build out of a value based innovation procurement across Europe.

The paragraph on *Value Based Innovation procurement to unlock innovation in health and social care delivery and system transformation* provides an analysis of the advocacy by EURIPHI partners and the use of EURIPHI considerations in policy discussion to advance the use of value based innovation procurement in health and social care in Europe

These sections will as such cover the impact analysis on the points mentioned in the proposal of the Improved networking of health and social care providers and public procurers in health care systems, the feasibility and effective use of the MEAT Value Based PPI and Cross-border PPI-legal guidance as an optimised procurement strategy, a successful PPI/PCP tenders writing for rapid diagnostics and integrated care

2. EURIPHI Impact Analysis

2.1 Operationalizing Cross-Border Collaborative Value-Based Innovation Procurement

To impact future use of Innovation Procurement and to ensure this responds to the specific needs to innovate health and integrated care delivery and as such transforms health systems providing an increased resilience and sustainability, EURIPHI developed multiple tools and guidance.

A Value based approach by means of adapted MEAT Value Based Procurement Frameworks will ensure that not only innovation is introduced but that this is done in the most economic advantageous way and responsive to the specific needs.

The toolkit is described in Deliverable 7.4 and the specific instruments described in WP2, WP5 AND WP6 and include:

Guidance to select and conduct the appropriate cross border value based innovation procurement procedure in a cross-border settings.



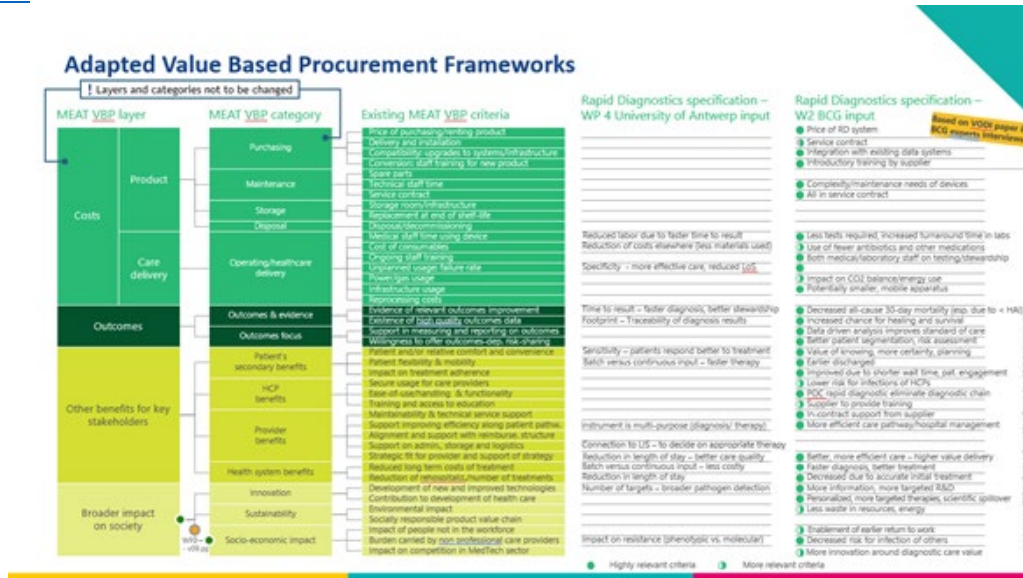
https://www.euriphi.eu/wp-content/uploads/euriphi_cross-boder-ppi_legal-guidance.pdf

Frameworks to operationalize value-based innovation procurement Applying a MEAT Value Based Approach and use of value based agreements

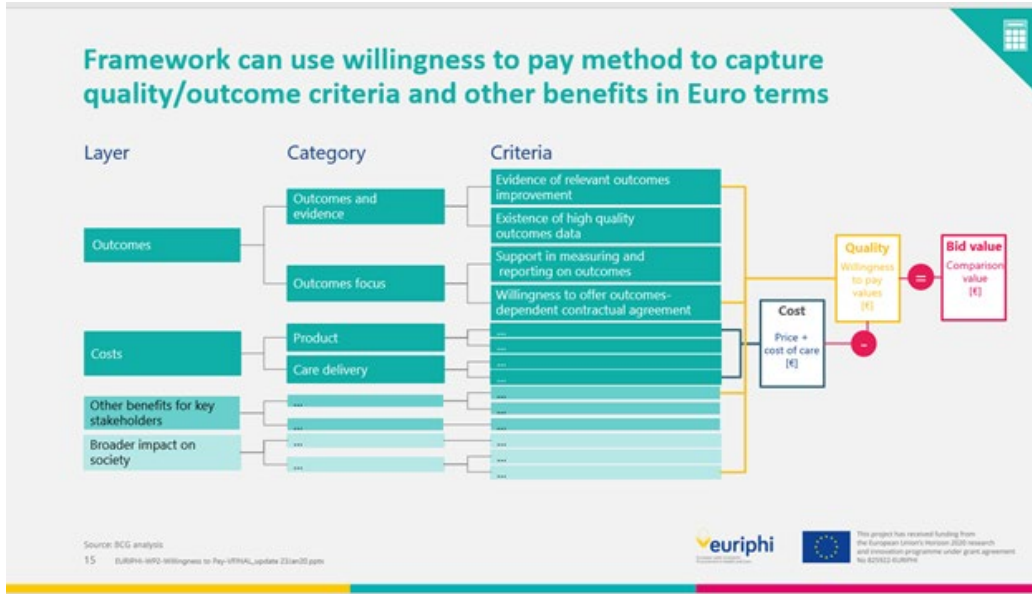
Including educational material is available on the EURIPHI website - [Value-Based Procurement section](#) of [Innovation Procurement](#).



With Adaptations specific in field of rapid diagnostics and integrated care are done within the EURIPHI project and available on the [EURIPHI Virtual Library](#) with [Key Functional Requirement and Metrix](#) listed within WP6.



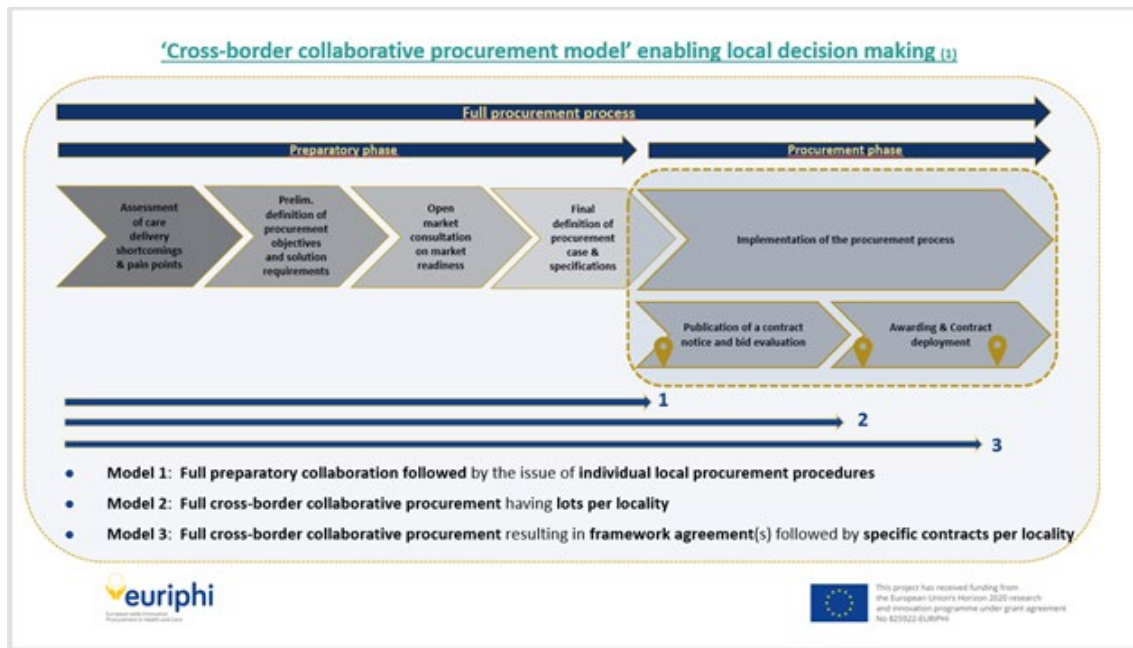
The MEAT methodology to award the most economic advantageous tenders will consider the cost and benefits and put a weighting or more advanced assigns a monetary value to the benefit to all turn into a direct method to obtain the economic most advantageous to calculate the effective cost minus the monetary value of the offer provided to define the bid value. The lowest is then the most economic advantageous as further described in the education slides under value based procurement at www.euriphi.eu



For the contracting phase aligned with value based procurement a Value Based Agreements taxonomy and consideration have been described in WP2

Ways forward to apply an effective cross-border collaborative Value Based Innovation Procurement Approach alongside the full procurement process recognizing the specificities of health and social care across Europe

The steps for the model as available to guide a cross-border cooperation. ([WP2](#), [WP5](#))



Governance for buyers applying cross-border value based innovation procurement

The steps for the model as available to guide cross-border buyer governance ([WP6](#)).

These support action for the deployment of value based and cross-border innovation procurement aim to increase the European impact and increase use of EU PPI/PCP to innovation the delivery of care and address current challenges.

2.2. Network and Readiness of Health & Social Care Region to apply innovation procurement of Innovative Solutions (PPI/PCP)

In order for cross-border EU PPI/PCP to have a significant impact EURIPHI identified the need for a "change management in the use of procurement and an overall commitment (policy level), willingness to invest (financially (policy level) and in human resources (policy and operationalization level)) and readiness to apply PPI/PCP (Operationalization level).

Therefore to assess the initial interest of the use of (Value-Based) PPI/PCP, the EURIPHI consortium identified and further analysed the report *The Strategic Use of Public Procurement for Innovation in the Digital Economy*, released in March 2019 by PwC in support of the European Commission Directorate-General of Communication Network, Content & Technology (DG CONNECT). The report benchmarks each country on implementing a mix of policy measures to mainstream innovation procurement across all sectors of public interest.

To have further analysis for our sector and in field of health and integrated care, we considered six out of ten indicators used for the assessment exercise performed in the abovementioned report. The choice of such six indicators mirror the availability of concrete plans and resources for innovation procurement at the country level, where innovation procurement is endorsed as a strategic priority. The six indicators are listed as follows: *Sectoral policies - Health care and social service; Action plan; Spending target; Incentives; Capacity building and assistance measures; Innovation friendly public procurement market*. The readiness for PPI in each country has been calculated as the sum of the scores of the six indicators listed above. Finally, the countries have been ranked and clustered into three categories corresponding to:

- High readiness: total score encompassed between more than 2 and 6
- Medium readiness: total score encompassed between more than 1 and 2 (included)
- Low readiness: total score encompassed between 0 and 1 (included).

The results as described in Deliverable 1.1 annex 1.

While this country level analysis provide an initial indication to have a real impact of change it was identified that a regional, local approach is most opportune to have a successful application of PPI/PCP in health and especially in integrating health and social care.

MedTech Europe in close cooperation with EUREGHA therefore build further awareness, organized multiple meetings and are building out the EURIPHI Health & Social Care Regions Network to ensure an impact. Following regions were identified being active and/or responsive to engage in the EURIPHI Network:

Table 1 Regions positively assessed for Value-Based PPI readiness

Country	Region
Belgium	Flanders
Denmark	Capital Region Region Southern Denmark
Italy	Campania Lombardy Puglia
Norway	Buskerud
Spain	Aragon Andalusia Basque Country Canary Island Catalunya Galicia
Sweden	Ostergötland Skane
UK	England Scotland Wales

The list is not comprehensive but a starting point to target regions to most successful apply EU Value Based PPI/PCP.

To innovate and transform the delivery of integrated care, in WP3 2 surveys⁴ submitted to organisations involved in EURIPHI and regions, PPOs and care delivery organisations across Europe

The survey was structured along five topics: stroke, dementia, COPD, aortic stenosis and multimorbidity. For more information on the selection of the topics, please, refer to paragraph 3.2. This resulted in following regions identified that expressed interest.

Table 2 Regions positively assessed for Value-Based PPI readiness for integrated care

Country	Region
Czech Republic	Olomuc
Denmark	Capital Region Region Southern Denmark
Italy	Campania Lombardy Puglia Trentino Alto Adige
Spain	Catalunya Galicia
UK	England Wales

These Integrated Care Innovation procurement objective prioritized are horizontal with a specific interest in:

- ICPO 1: Integrated risk assessment tools for stroke, dementia and multimorbidity;
- ICPO 2: Integrated solutions to support information sharing and real time communication for multimorbidity, aortic stenosis and cross-cutting conditions;
- ICPO 3: Integrated monitoring solutions for people living with complex needs due to stroke, multimorbidity and COPD.

This as an example of identifying common unmet needs where there an EU PPI/PCP can have a highest impact to innovative the delivery of care and provide specific innovative solution in response to the specific needs.

Zooming out following overarching priority areas of regions, member states were listed by the TO-REACH Strategic Research Agenda, underlining ten overarching priority areas, clustered into three themes – overall design principles, sector-specific priorities and supporting conditions – as follows:

⁴ For more information on the methodology applied to the surveys, please, refer to Deliverables D3.1 and D3.3.

Overall design principles

1. Health systems need to be organised as person and population-centred care, with ample attention to individual and population needs;
2. A change towards integrating services across health sectors and traditional health system boundaries is required.

Within Sector specific priorities

3. Long-term care requires to be developed to meet future demand;
4. Hospitals will experience new roles, tasks and organisational structures;
5. Integrated services require a strong primary care focus;
6. Mental health services need to be reinforced.

Supporting conditions

7. Adequate numbers, skill-mix, roles and tasks of health care professionals;
8. Adequate and people-centred ICT;
9. Attention for quality improvement and how to measure it;
10. Improvement in governance and financing.

The EURIPHI Health & Social Care Region Network meetings and network engaged and is open for all those interested in Value Based Innovation procurement and EU project. <https://www.euriphi.eu/networks/health-regional-network/> The network is on a journey on building out members and as such ensures an increased readiness for applying and engagement in EU cross-border value based Innovation procurement initiatives.

Table 4 in deliverable 1.1 resumes the regions indicated by EURIPHI partners and their status in the EURIPHI In total, with 45 people in 32 regions spread in 17 countries contacts were established and a continued outreach takes place to explore their interest in joining the EURIPHI Health & Social Care Regions Network as well as to take part in EURIPHI promoted.

Further alignment of multiple EU supportive funding streams has been recommended by EURIPHI partners.

For the Post EURIPHI post 2020 focus of the Network will be, as described in Deliverable 7.5.

1. To ensure a regular information flow on initiatives (EU, Regional) aimed at innovating care delivery by means of Value Based Innovation Procurement – Regions readiness to use Innovation Procurement; analyse investment availability; structural commitment (eg. By means of innovation officers), priority areas in policy makers agenda; leveraging cross border cooperation models; value-based agreement initiatives. Information on new opportunities, EU calls will be shared.
2. To provide (common) responses to (EU) policy initiatives – EU Expert Panel of Effective Ways of Investing in Health, e.g. Opinion on Public Procurement in healthcare systems; EU joint procurements Agreement; RescEU.
3. To participate in platforms for dialogue and create partnerships – PPP in Health; EU funded projects; cross-border cooperation.

Multiple regions part of EURIPHI continue to and/or newly engage in PPI/PCP recently submitted or that were granted.

2.3 Building out Value Based (Innovation) Procurement community of practice

In the EURIPHI Consortium, multiple procurement organization with a regional or national responsibility joined for a first time in an EU project on PPI/PCP. Together with procurement organization that have been most active in EU PPI/PCP projects they identified modes of cooperation and build out learnings and engaging as a community. This resulted in proposed new model of cross-border cooperation and also identified the challenges to engage in EU PPI/PCP calls.

An EURIPHI Value Based Innovation procurement community is initiated during the project as described by https://www.euriphi.eu/wp-content/uploads/euriphi_community-of-practice_terms-conditions.pdf and beyond the consortium a few members subscribed.

Members have been invited and engaged in the 1st EU Value Based Procurement Community of Practice Conference www.vbpconference.eu and thematic session www.vbpcommunity.eu

As part of being part and joining the EURIPHI VB CoP <https://www.euriphi.eu/networks/community-of-practice/> the members that signed up as well as EURIPHI Partners have been informed about the opportunity to join in a formalized the Value Based Procurement Community of Practice (VBP CoP), partnering for patient centric, sustainable healthcare

https://www.euriphi.eu/wp-content/uploads/vbp-community-of_practice_description.pdf

As such the EURIPHI VBP CoP will be integrated in a sustainable VBP CoP with the EHPPA (European Health Public Procurement Alliance), (of which several of it members were partners in EURIPHI, MedTech Europe (coordinator EURIPHI and BCG (Partner in EURIPHI) as founding partners .

Within the VBP CoP a specific focus will also be given to “innovation procurement and the work of EURIPHI. Ex in 2020 a thematic focus will be on value based agreements with using the EURIPHI output as a starting point (eg. value-based agreement WP2).

This VBP CoP brings together persons with a key interest and experience in value based procurement of procurement organization organisations, procurers, the Medical Technology industry, health care professionals, providers, health authorities and other stakeholders with a common interest in value-based procurement.

The objective of the VBP CoP is to foster a change in practice and implement value-based procurement and innovation procurement both in the public and private healthcare sectors. This would bring the most economically advantageous solution into healthcare, taking into account the value offered to patients, to the care givers, the providers and potentially, to society.

MedTech Europe is committed to provide the necessary secretarial support at least until the end of 2021 ensuring a continued focus on value based innovation procurement and awareness of EU initiatives in field of procurement. As such ensure a major opportunity to ensure a continued impact of the EURIPHI work.

2.4 Value Based Innovation procurement to unlock innovation in health and social care delivery and system transformation

While the EURIPHI Project provides the necessary supportive tools and initiates the building out of networks as supportive and coordination actions to increase the use of innovation procurement of value to patients, health carers, health systems and society and to improve the impact and response to future EU calls, it will be critical to ensure innovation procurement becomes a recognized policy tool in Europe and enables the use of innovation and innovative solutions to address the challenges faces. This to do so in economic most advantageous ways by (applying cross-border collaborative value based innovation procurement). This while respecting the specific needs and competencies, values and of health systems and authorities across Europe.

It will be important that Value Based Innovation Procurement is recognized to unlock transformation of value to obtain high value quality care, resilient and sustainable health systems and a society with its citizens in good health in return ensuring a more social and societal-economic strong Europe.

EURIPHI and EURIPHI partners will seek to continue its impact to realize this by an outreach to policy initiatives, at European, National, and more local levels. A first is in response to the expert panel on the expert panel of DG Sante on effective ways on investing in health developing an opinion on the use of public procurement in healthcare systems. Further input will be provided connected to initiatives to build out a value based health care, to professionalize procurement, to increase the use of EU and Regional initiatives using Innovation procurement to modernize health and social care